

# Feng Shui Study for Proposed New Holiday House @ The Village of Krasny Mayak for the Kapshina Family

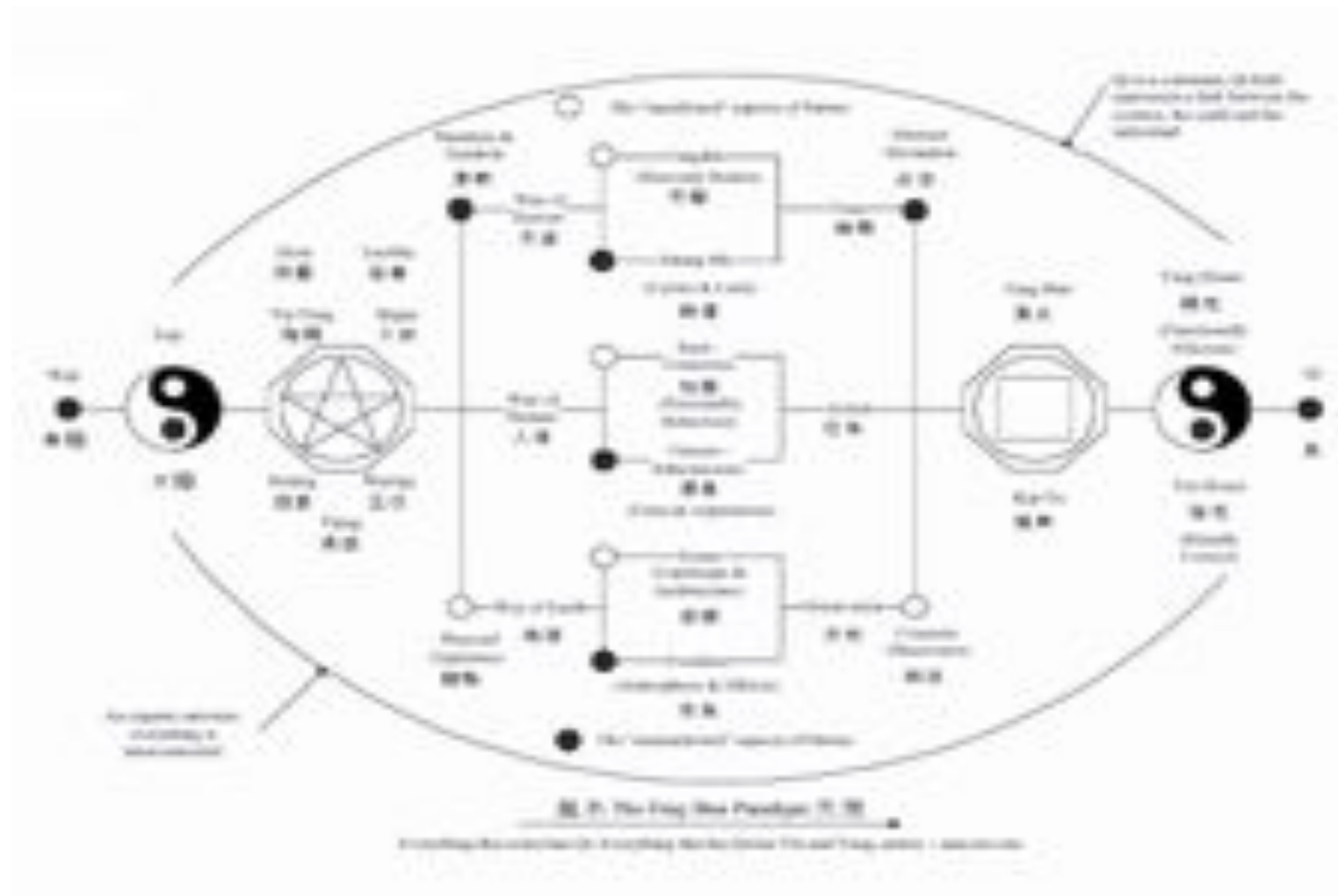
An Onsite Practical Project for the Master Course on Feng Shui and Residential Development  
Conducted by Howard Choy (ECOFS) at St. Petersburg 08-11 September 2011



Жемчужина  
дракона  
консультации  
и проектирование  
фэн-шуй



Residential site planning using Feng Shui means that we should look at the site from a Feng Shui perspective, i.e. from the Feng Shui paradigm and its mini-worldview and work with its assumptions and philosophy.



## In a “nut shell” or roughly speaking:

### **Assumptions we made in Feng Shui:**

Everything has Qi.  
Everything that has Qi has Yin and Yang.  
Everything is inter-connected by the concept of Qi.

### **Philosophy we adopted in Feng Shui:**

“Tian Ren He Yi”, or Nature and Man are one.  
The Yi Li, or the Principles of Changes.  
Correlative thinking using dialectics, metaphors, numbers and symbols.  
Taoist, Confucian and Buddhist thinking.

### **Methodologies we used in Feng Shui:**

The theories of Yin and Yang, San Cai, Siling, Wuxing and Bagua.  
Rational analysis supported by intuitive feelings and synchronistic calculations.  
The San Cai methodology for analysis and design.  
Qi engineering using the concept of Ti and Yong or Principle and Function.

### **General objectives to achieve in Feng Shui:**

To satisfy the needs of the occupants including their physical, psychological and spiritual aspirations.  
To take advantage (“Cheng” and “Na”) the Sheng Qi of the site and to avoid the Sha. That is to maximize the potentials and to minimize the disadvantages.  
To fulfil the Chinese desire to be “Tai He” (Great Peace and Harmony). “Ziran” (being self-thus) and Wuwei (being responsive and non interfering).

Since the core competency of a Feng Shui practitioner is to read and analyse Qi and to work with Qi, we need to know the different meaning of Qi used by the Chinese (Gyda's research findings):

- 1) “Qi” seen as a “concrete thing” – a definite object in contrast to the Dao, which has neither spatial restriction nor physical form, that which is manifested.
- 2) “Qi” seen as a “subtle, incipient, actuating force” which is not yet visible - that which is hidden.
- 3) “Qi” seen as a “material force” that has both matter and energy, as opposed to the concept of “li” or Principle. For example, in TCM, Qi denotes the psycho-physiological power associated with blood and breath – Qi that keeps us alive.
- 4) “Qi” seen as a “concept of synergy” – a “field” of different things that are not related but finally connected together.

The Chinese often add an extra character to the character Qi to give it a more precise meaning. For example, “Sheng Qi” and “Sha Qi” or “Jing Qi” and “Shen Qi”.

### Heaven Qi

Analyze the effects of the tangible Heavenly Bodies on us, such as sunlight and shade, cold wind and warm breeze, the weather patterns and the seasonal changes. At the same time analyze the effect of the intangible time and spatial orientation using the Uig School techniques such as Flying Stars and BaZhai or the Eight Houses Methods based on the Yi Principles such as Yin and Yang, WuXing (Five Elements) and Bagua (The Eight Trigrams).

### Earth Qi

Analyze the physical component of a site, such as the topography and the composition of the land, location and siting, external appearance, aspects and prospects, internal layout and interior decorations. At the same time analyze the intangible effects of the atmosphere and the nuances created by the physical form. In landscape Feng Shui we trace the Dragon (Long), look for the Sands (Sha), locate the Water (Shui) and establish the Feng Shui Spot (Xue). In an urban setting, we look for the presence and the harmony of the Siting or the Four Mythical Animals of the Black Turtle, the Crimson Bird, the Azure Dragon and the White Tiger.



### Human Qi

Analyze the human behavior and the personality of the end users including the seen and the unseen effect both on the conscious and the subconscious levels. Human needs, motivations, fears and longings often affect the outcome in a physical way. At the same time analyze the human requirements both on the functional and psychological level and also the structure of the organization and the decision making process that went on in the day to day running of a business or a home.

### The Feng Shui Solution

The wholistic solutions using Feng Shui can often be found within the qi field bounded by Heaven, Earth and Human Qi.

# THE FUNCTIONING MECHANISM FOR FENG SHUI

Qing 情 (Feelings and Affections) and Shi 时 (Being Timely)

<辨山情水意>

Identifying feelings and affection from mountains and rivers (landscape)

Written by Master Tan Yang-Wu 谈养吾

When speaking about Xingshi (Form School)  
There is no other word than “affection” (qing)  
When speaking about Liqi (Compass School),  
There is no other word than “being timely” (shi).

Being affectionate and timely is considered to be fortunate,.  
Missing affection and missing time is considered to be unfortunate.

(Whether speaking) with Form or with Compass Experts,  
One should know they do not go beyond the scope of these two words  
“qing” and “shi”.







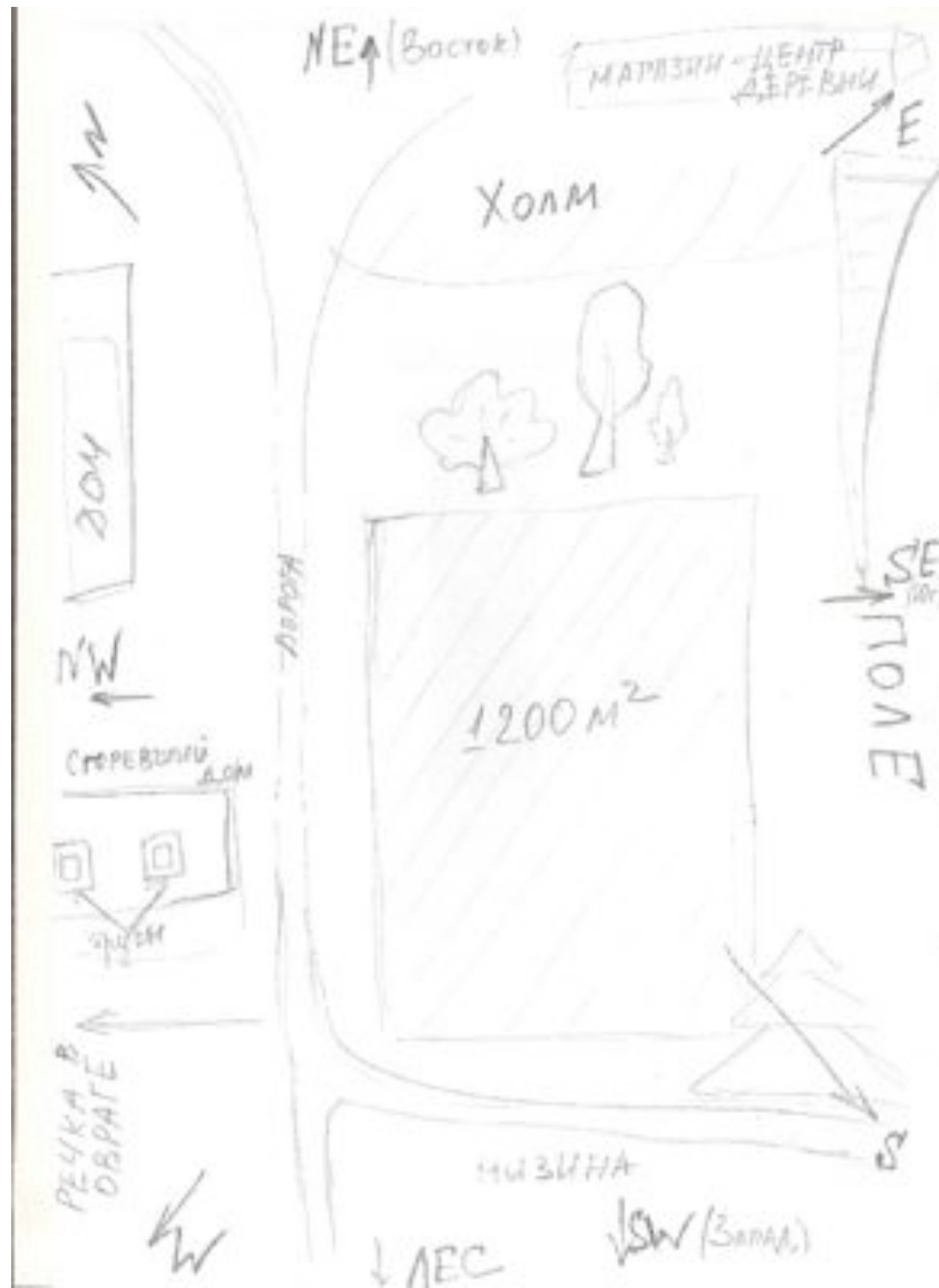
Located to the South West of St. Petersburg about 2 hours drive.  
Pass the village of Krasny Mayak after crossing a lake by a bridge.



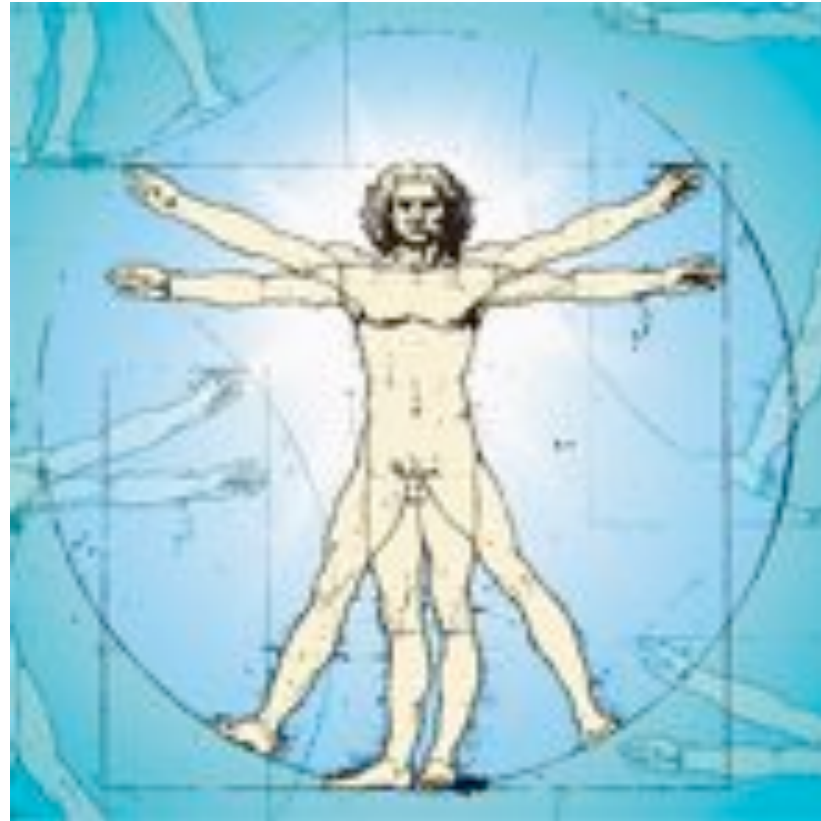
Picture of the small lake on the way, follow by some panoramic views of the site







A sketch of the site by Elena Kapshina, our client.



## **Human Qi Study**

### **Our Clients Functional Requirement:**

A holiday house with 120 – 200 sq. M of floor space in two-storey.

A big living room for the family, friends and relatives.

3 bedrooms for the family plus two more for friends and relatives.

Big windows and generous spaces, yet able to be heated up in winter.

### **Birthday Details:**

Husband: 10 Dec. 1964 (Ming Gua number: 9 East Four)

Wife: 30 Nov. 1976 (Ming Gua number: 9 East Four)

Mother: 01 July 1946 (Ming Gua number: 6 West Four)

Son: 03 July 2003 (Ming Gua number: 6 West Four)

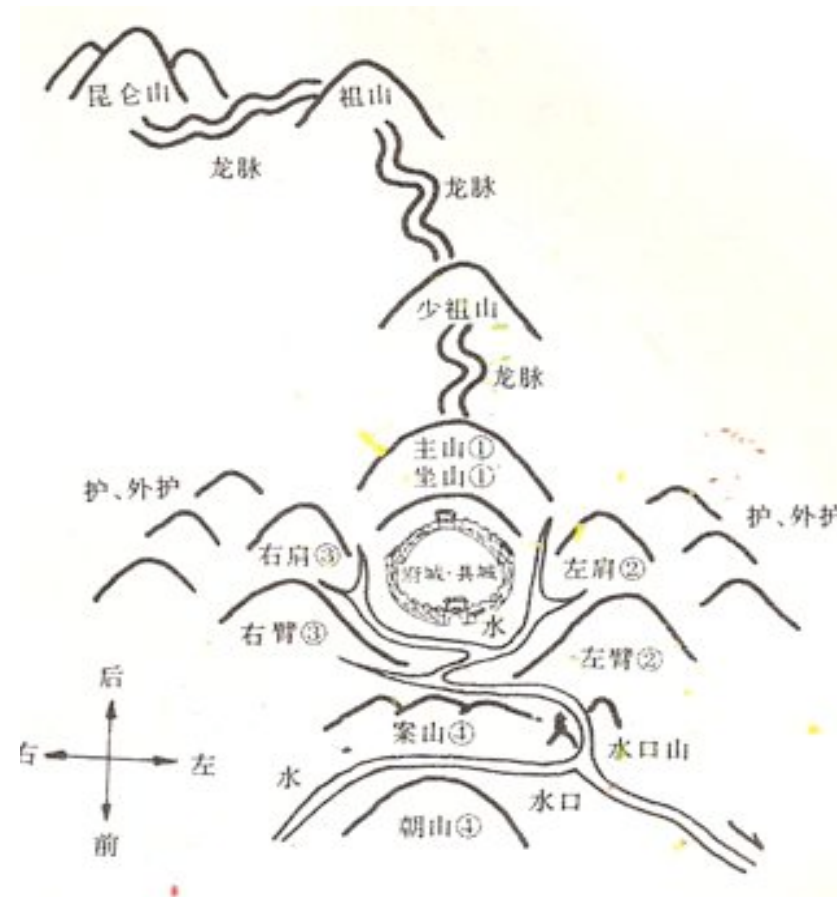
Proposed house is West Four, near support for husband and wife in Main door, bed and stove orientations.

### **The land called Elena and her family...**

“We feel ourselves different here  
The micro-climate suits us  
It is picturesque  
Has a birch forest and a lake nearby  
The village is like a park  
Our son became stronger after 2 weeks here  
He drinks goat’s milk  
He looks positively healthy  
Elena can picture herself watching the sun set on her verandah  
She likes to plant some trees, and build a sauna near the house  
The family feels secure here  
The place is away from any roads  
The people in the village know each other and look after each other..”

***These are positive feelings we need to maintain and enhance with our Feng Shui.***

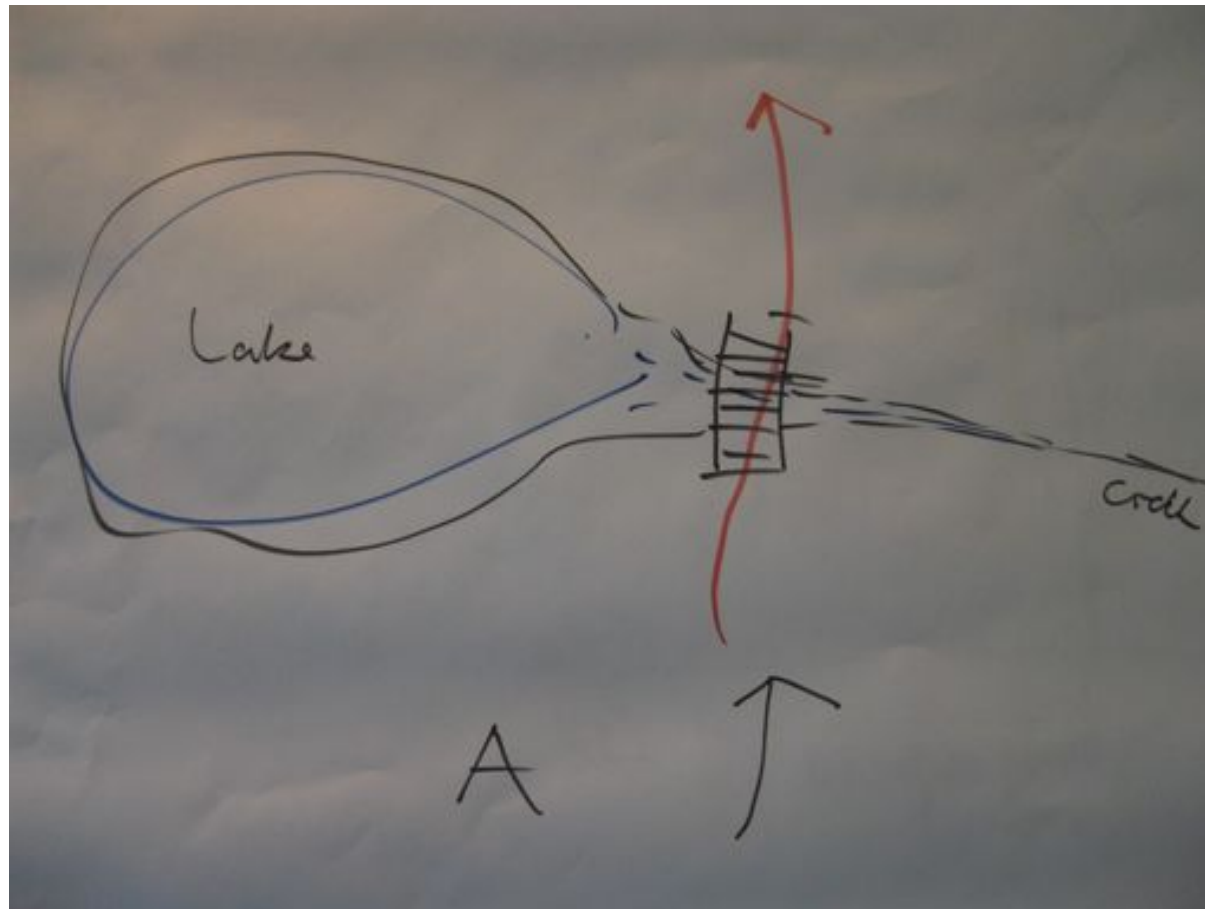




## Earth Qi Study



Looking at the surrounding we can understand why the Family feels secured in their land because the site has a Classic formation called The Nest. The Qi of the land is Assembled in the their site like a Chinese wok.



The Shui Kou (Water Mouth) structure of the bridge crossing  
The lake formed like a natural gateway into their site.



Our Yin Yang Study of the site showed the new house is best To be located towards the North-West quarter of the site.



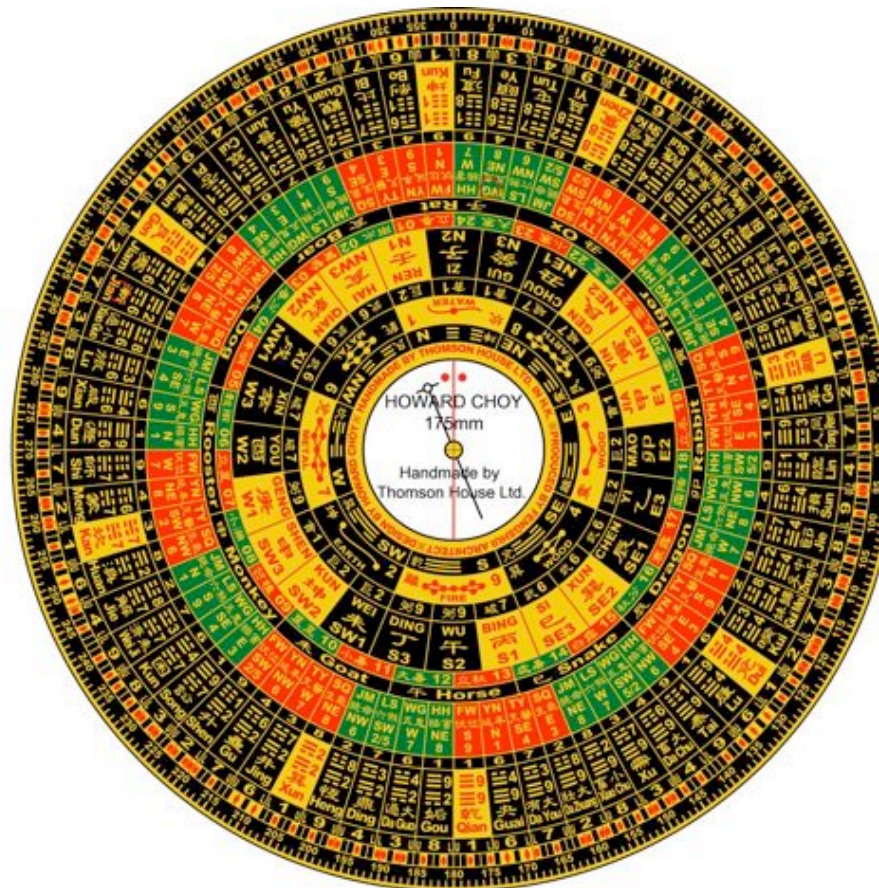
The new house can use the existing two trees as a Landscape Marker to locate its presence on the land but it needs to be located at a safe distance from the trees.





## **Wuxing (Five Elements) Study**

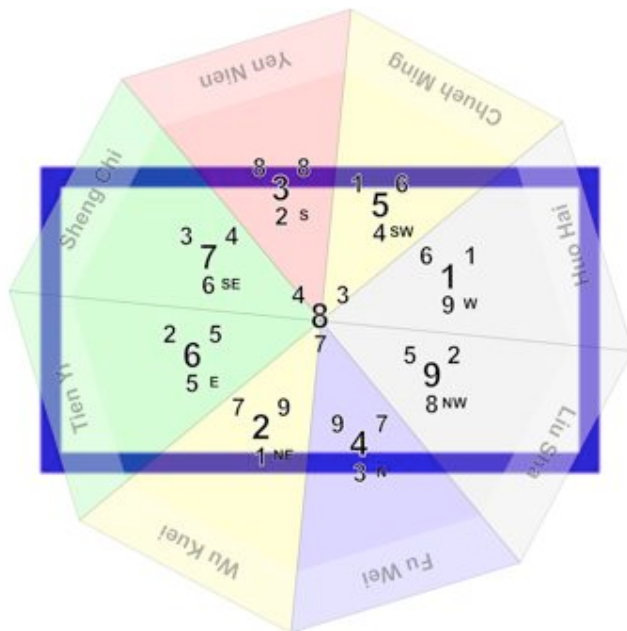
The site has a lot of Wood and Fire Elements, so the new house should Maintain the same Wuxing Qi and Have a pitched roof with walls made of wood like their neighbors.



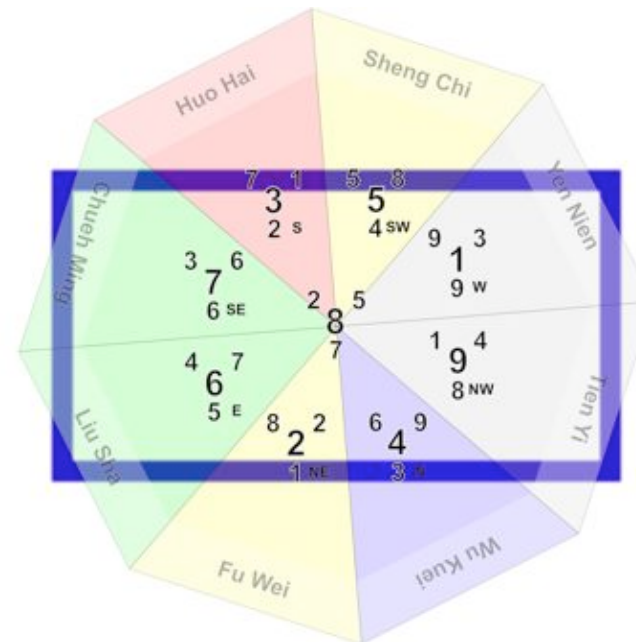
# Heaven Qi Study

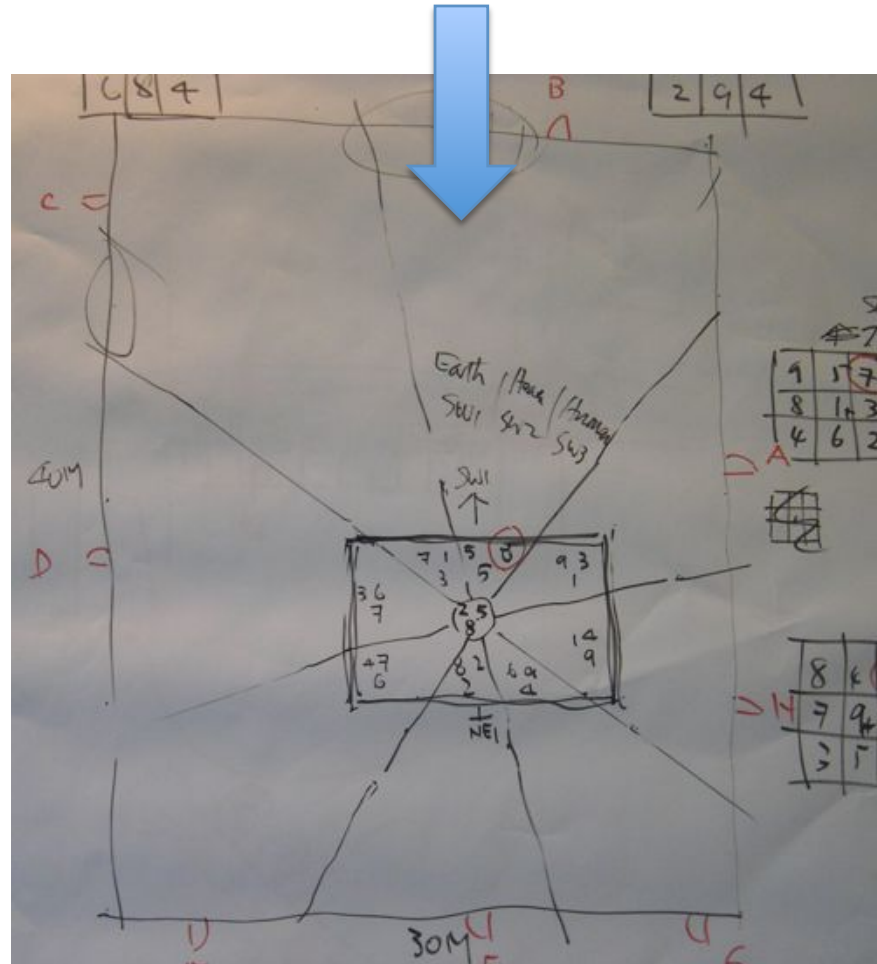
We have two options to orientate the new house, after due considerations it is decided that the SW1 Facing is a better alternative, it showed Gua Qi support for both Wealth and Health and it also has the fortunate of Yin Yang Adding up to 10 of the Sitting Stars with the Period Stars which means there is additional auspicious support for Health and Harmony in the family.

Period 8 S3 Facing N3 Sitting



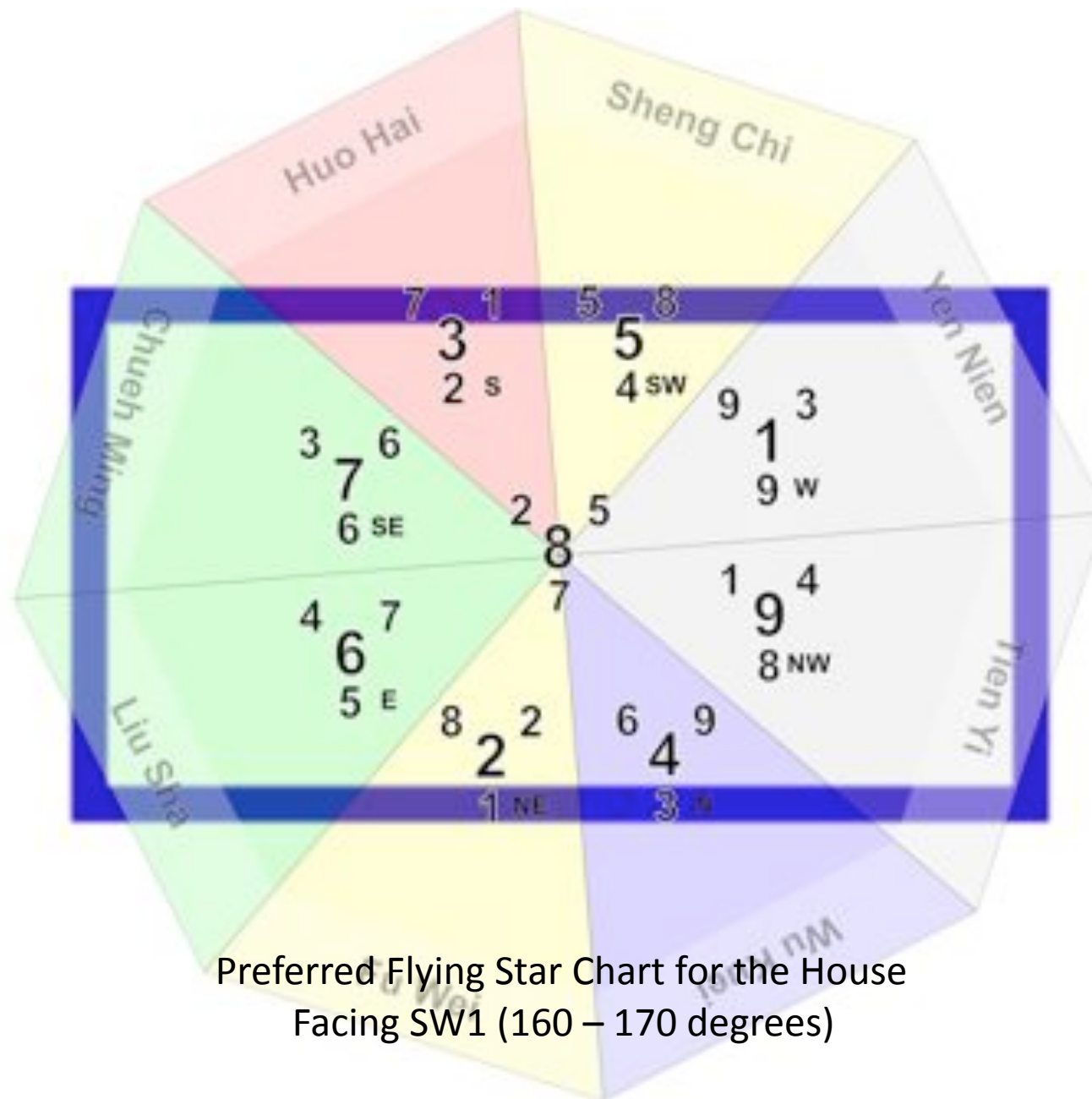
Period 8 SW1 Facing NE1 Sitting





Study of the external influence of space onto the internal Gua Qi Field of the natal chart indicated, from a Flying Stars point of view, It is best top located the gateway into the site on the SW1 direction.

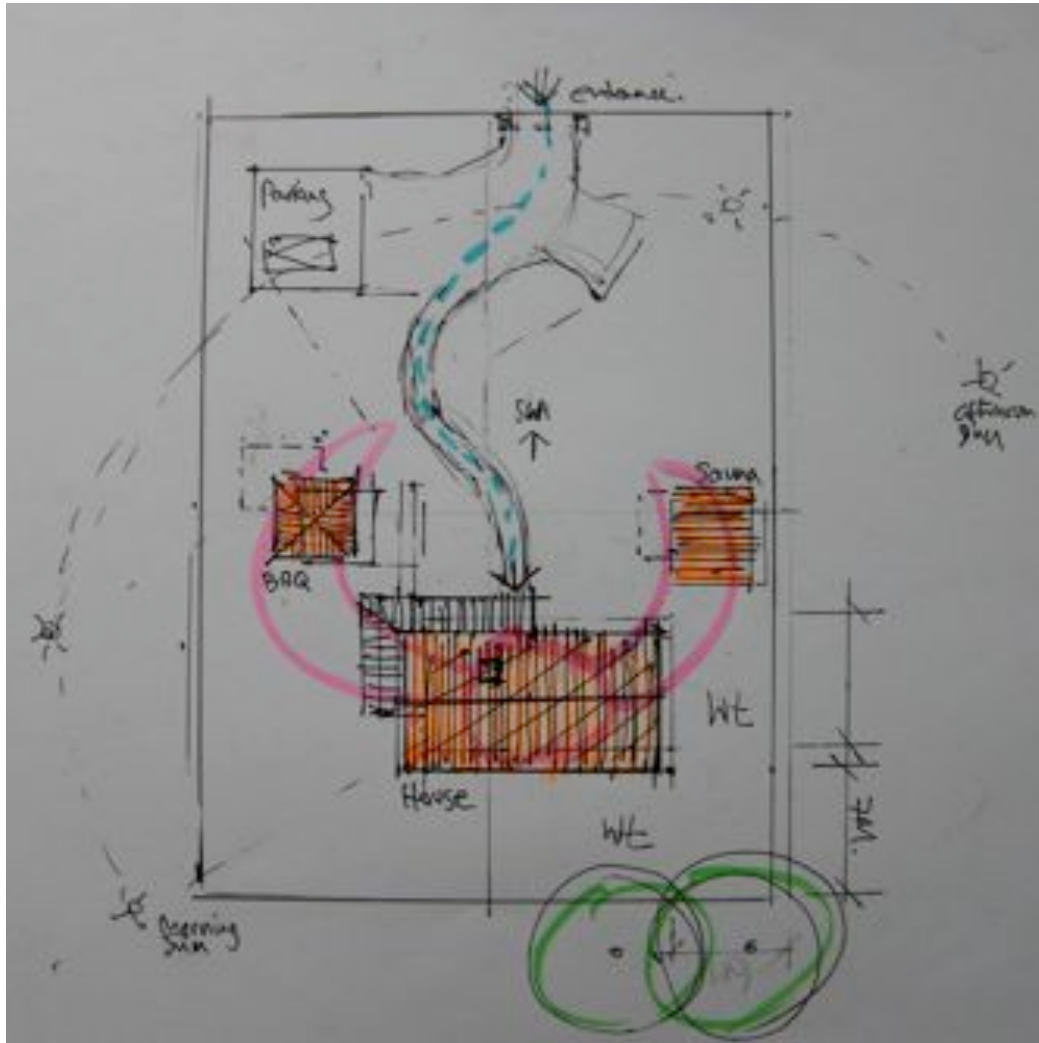




Preferred Flying Star Chart for the House  
Facing SW1 (160 – 170 degrees)



# Feng Shui Brief for Planning



## 1) Location of major buildings on site:

The main house should be located  
On the higher half of the site, closer  
To the existings two trees.

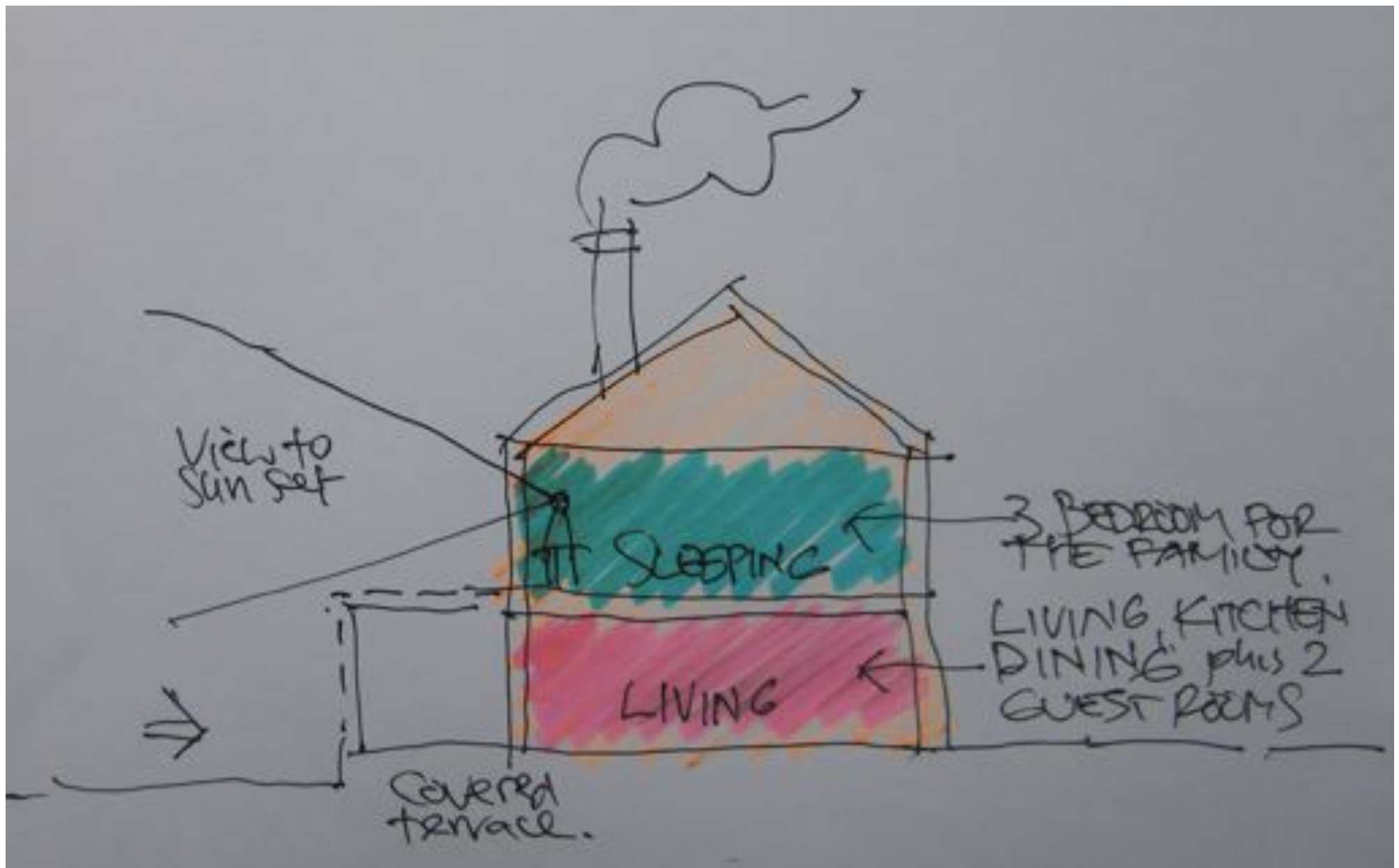
The Sauna can be located to the right.

The BBQ Shelter to the left of the house.

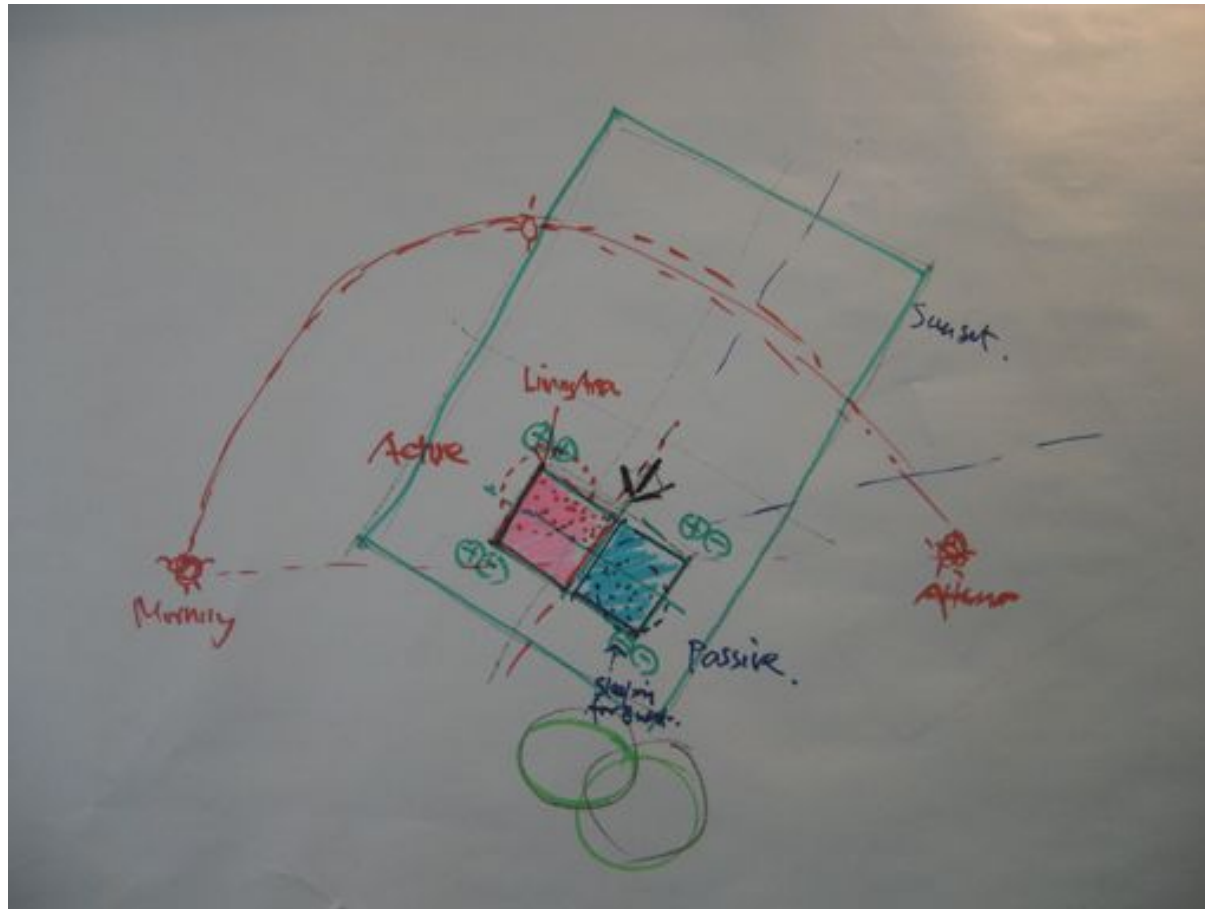
Entry gate from SW1 opposite the centre of  
The house.

Car parking to the left corner of the site.

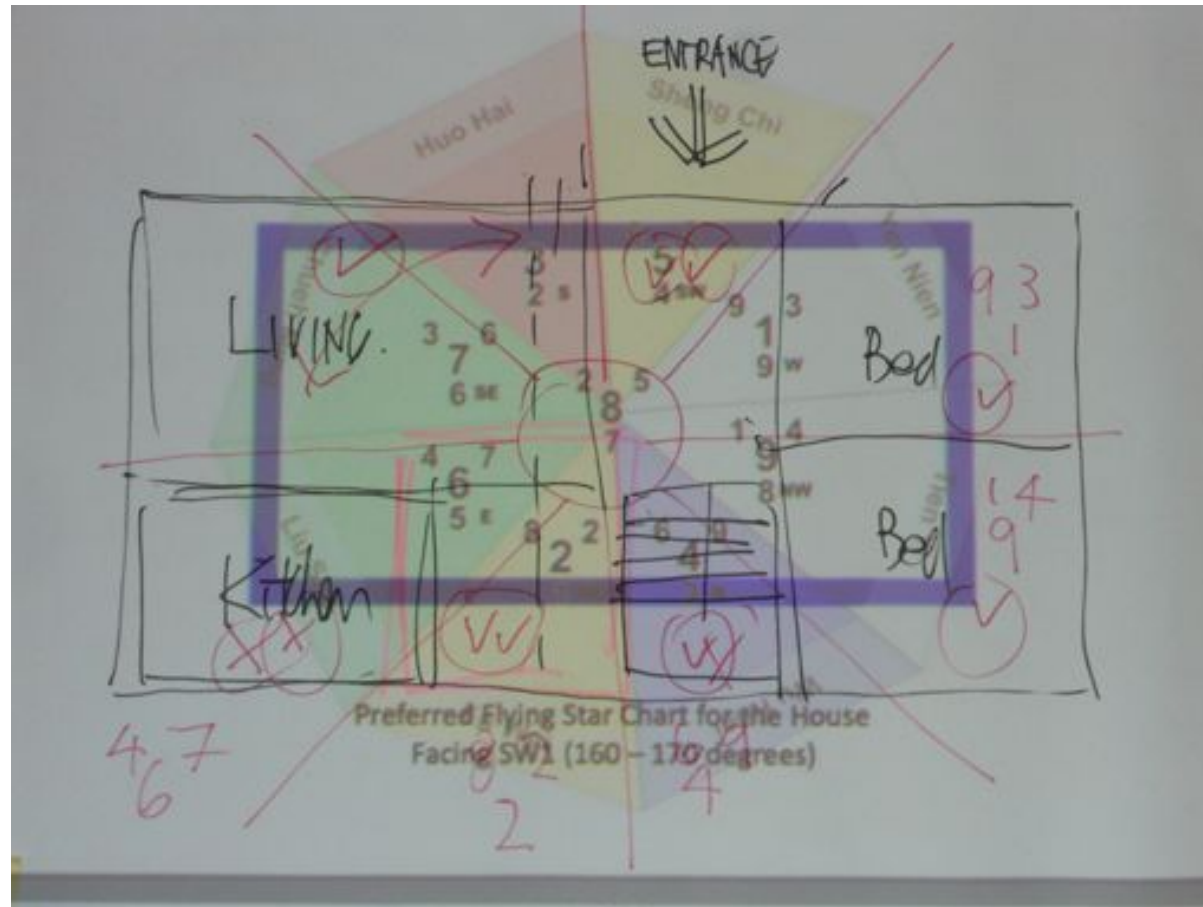
All together they will form an auspicious  
Siling (Four Mythical Animals) Model.



**2) Vertical Organization** – Yang and public area on the lower level, private and Yin area on top.



Form analysis to determine organization of internal spaces.  
Then check with Flying Stars considerations, so it is practically  
Efficient and ritually correct and is connected to the land.



Flying Stars analysis to determine organization of internal spaces.

Combined suggestions: Main entrance from SW.

Bedrooms for the Guests on the ground Floor to be located to the West and NW.

Staircase to the North. Dining to the North East. Kitchen to the East and

Living area to the South East and South.

# GROUND FLOOR PLAN

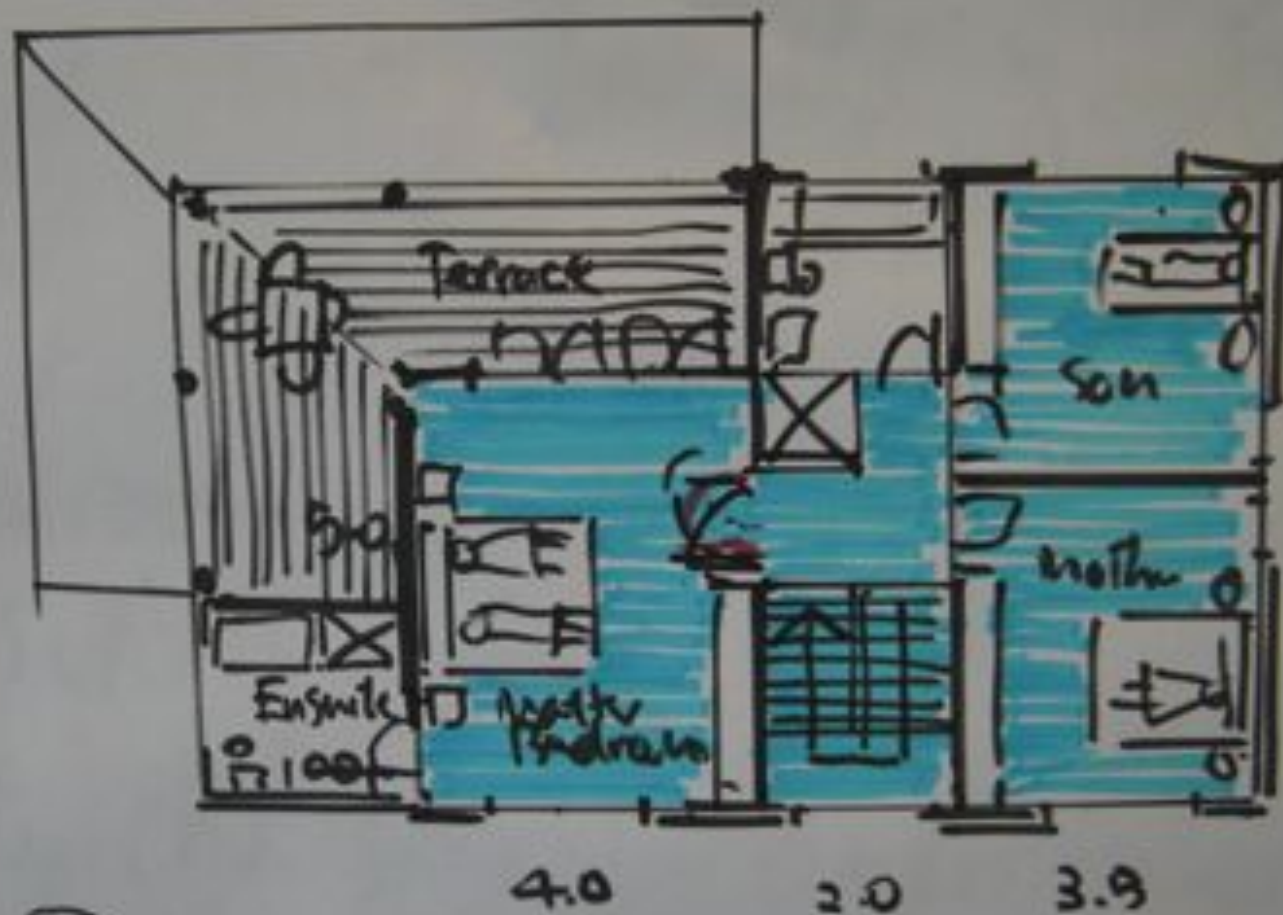



**Suggested  
Planning**

$$\text{Total } 90\text{m}^2 + 70\text{m}^2 = 160\text{m}^2$$

3.5  
3.0





 UPPER FLOOR PLAN



Total Floor Area: 160 Sq M on two l. levels  
Timber construction with metal pitched roof.  
Plus outdoor sauna and covered BBQ area and car parking.

